

Installation Manual

5678000G

GR20-Series Guide Rail Systems

Models

GR20 1-1/4" Pump Disconnect for Ordinary Locations

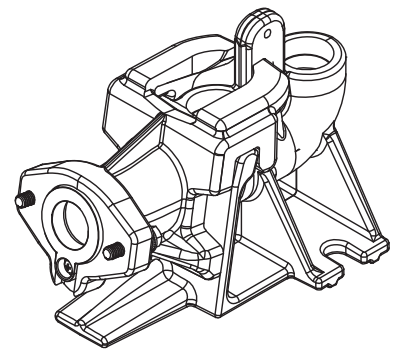
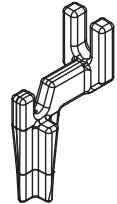
- For use with LSG200 and LSGX200-Series Grinder Pumps
- For use with LGV02 and LGH02-Series Grinder Pumps

GR20NS 1-1/4" Non-Sparking Pump Disconnect for Hazardous Locations

- For use with XLSG200 and XLSGX200-Series Grinder Pumps
- For use with XLGV02 and XLGH02-Series Grinder Pumps

Features

- Heavy cast iron construction
- Accommodates single 1-1/4" rail and discharge pipe
- Auto-alignment feature
- Upper rail support bracket
- Includes sealing grommets



NOTICE

Installer: Manual must remain with owner/operator.

Record information:

7000 Apple Tree Avenue
Bergen, NY 14416
ph: 1-800-543-2550
fax: 1-585-494-1839
www.LibertyPumps.com

Keep this manual handy for future reference.
For replacement manual, visit LibertyPumps.com,
or contact Liberty Pumps at 1-800-543-2550.
Retain dated sales receipt for warranty.

Model: _____

Serial: _____

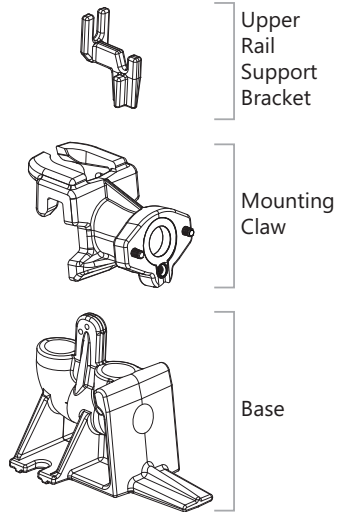
Mfg Date: _____

Install Date: _____

GR20-Series Assembly

The GR20 quick disconnect assembly is designed to allow easy installation and removal of the pump. When installed correctly, the guide rail assembly creates a tight discharge seal and provides a means to lift the pump without disconnecting any of the discharge piping. Ensure that installation is done per instructions.

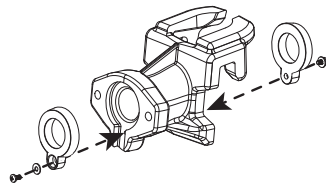
The guide rail system consists of three parts: Upper Rail Support Bracket, Mounting Claw, and Base.



Preparation

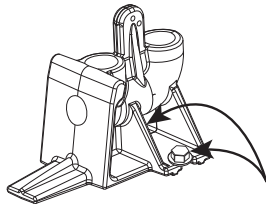
The claw has sealing grommets that provide the seal between the claw and base and also the seal between the claw and the pump.

1. Insert grommets into mounting claw.
2. Apply a light amount of sealing grease (provided) to the face of the grommets.

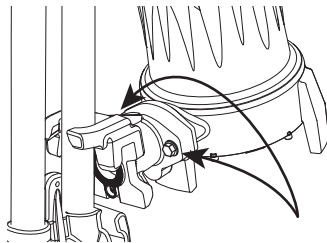


Installation

1. Mount the base to the floor of the tank, referring to the *Base Mounting Template* measurements. Secure the base to the basin floor at the base slots with 1/2" bolts (stainless steel recommended).

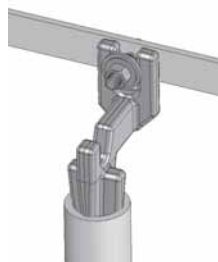


2. Using supplied bolts, mount the claw onto the pump discharge.



3. Insert upper rail support bracket into guide rail pipe and secure to tank.

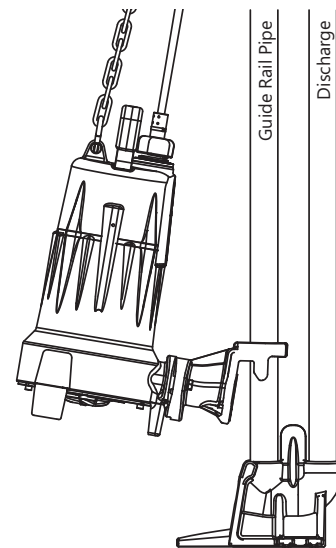
Note: a heavy guide rail pipe of 1-1/4" galvanized or stainless steel is recommended.



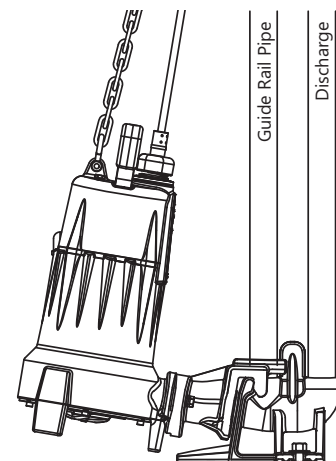
Pump Connection

1. Using a lifting chain, slip the pump claw over the upper guide rail support bracket.
2. Lower the pump at an angle down the guide rail into the tank (basin).
As the pump nears its final position, the straightening rib squares the pump bracket with the guide bracket ears. When the pump bracket ears hook the guide bracket ears, the chain will slacken.
3. Grasp the lifting chain and shake the pump to ensure a good seat with the gasket.
The pump is suspended by the bracket ears. The weight of the pump compresses the gasket against the mating flange of the guide bracket base.
4. The lifting chain may be removed from the hoist and hooked near the upper rail support bracket.

Operation



Disconnected Position



Operational Position

This page intentionally left blank.

Esta página se dejó en blanco intencionalmente.

Cette page a été laissée vide intentionnellement.

Base Mounting Template

Plantilla de montaje de la base

Gabarit de montage de base

